



DigitalFlow™ XGS868i

Panametrics Steam Flow Ultrasonic Transmitter

Compact Housing

All of the DigitalFlow XGS868i's electronic components are housed in a compact transmitter package that can be installed right at the flow measurement point. This greatly simplifies wiring of the transducers and results in trouble-free operation.

Steam Mass Flow Rate

The measured flow velocity rate, along with the input of temperature and pressure, allow the powerful onboard computer to calculate the steam mass flow rate. The mass flow rate can be displayed locally, or transmitted to a remote system via an analog or digital communications link.

Dual-Channel Model

In addition to the standard single-channel model, an optional two-channel model provides enhanced accuracy when measuring two paths on a single pipe. It can also be used to measure a single path on two different pipes.

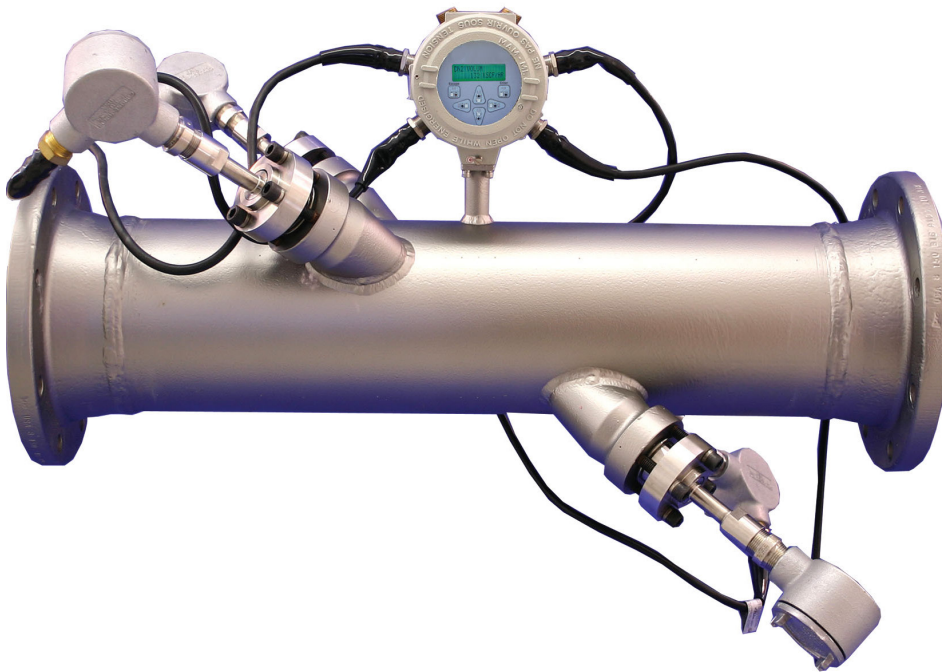
Low Operational Costs

Because a DigitalFlow XGS868i installation produces no flow obstruction, the energy-robbing pressure drops and high maintenance requirements characteristic of other flowmeters are eliminated. The special sealed metal transducers supplied with a DigitalFlow XGS868i system are immune to the erosion and stress caused by thermal expansion cycles.

Additional Options

PanaView PC Interface Software

The DigitalFlow XGS868i communicates with a PC through a serial interface and Windows® operating systems. Consult the manual for details on sites, logs and other operations with a PC.



Applications

The DigitalFlow XGS868i steam flow transmitter is a complete ultrasonic flow metering system for measurement of:

- Saturated steam
- Superheated steam

The DigitalFlow XGS868i is designed to measure the mass flow rate of saturated or superheated steam. The DigitalFlow XGS868i offers a unique combination of rangeability, ease of installation, low maintenance and accuracy in a low-cost transmitter.

The state-of-the-art DigitalFlow XGS868i steam flow transmitter shares the many advantages offered by the other products in Panametrics's line of innovative ultrasonic flowmeters. The all-digital XGS868i creates no pressure drop; has no moving parts or parts that foul or collect debris; seldom requires maintenance; and provides reliable, drift-free operation.

Features

- Economical flow measurement in a compact transmitter
- No moving parts
- No pressure drop
- Wide rangeability with 1500 to 1 turndown ratio
- Non-obstructive flow measurement
- Tolerance to dirty streams
- Low maintenance
- Suitable for high temperatures
- Two-path measurement available for maximum accuracy

Technical Specifications

Operation and performance

Fluid Types	Saturated or superheated steam
Pipe Sizes	2 in to 48 in (50 mm to 1200 mm) nominal bore (NB) _r
Pipe Materials	All metals. Consult Panametrics for other materials.
Flow Accuracy (Velocity)	±1% to 2% of reading typical Accuracy depends on pipe size and whether measurement is one-path or two-path. Accuracy to ±0.5% of reading may be achievable with process calibration.
Repeatability	±0.2% to 0.5% of reading
Range (Bidirectional)	-150 ft/s to 150 ft/s (-46 m/s to 46 m/s)
Rangeability (Overall)	1500:1 Specifications assume a fully developed flow profile (typically 20 diameters upstream and 10 diameters downstream of straight pipe run) and flow velocity greater than 3 ft/s (1 m/s).
Measurement Parameters	Mass flow, standard and actual flow, totalized flow, and flow velocity.

Electronics

Flow Measurement	Transit time
Enclosures	<ul style="list-style-type: none"> Standard: Epoxy-coated aluminum Type 4X IP66 Class I, Division 1, Groups B,C,D Flameproof ISSeP02ATEX008 II 2 GD EEx d IIC T5 IP66 T95°C Optional: Stainless steel
Dimensions (h x d)	Standard: Size 8.2 in x 6.6 in (208 mm x 168 mm), weight 10 lb (4.5 kg)
Channels	<ul style="list-style-type: none"> Standard: One channel Optional: Two channels (for two pipes or two-path averaging)
Display	Optional: 2 line x 16 character backlit LCD display, configurable to display up to four measurement parameters in sequence
Keypad	Built-in infrared, six-button keypad for full functionality operation

Power Supplies	<ul style="list-style-type: none"> Standard 100-240 VAC ±10% Optional: 12 to 28 VDC, ±5% <p>Note: For DC-powered meters, Class 2 rated supplies must be used for the line power</p>
Power Consumption	20 W maximum
Operating Temperature	-40°F to 140°F (-40°C to 60°C)
Storage Temperature	-67°F to 167°F (-55°C to 75°C)
Standard Inputs/Outputs	Two 0/4 to 20 mA isolated outputs, 600 W maximum load Namur NE043 compliant
Optional Inputs/Outputs	<p>All analog and digital I/O are available in specific combinations. Consult Panametrics for available option cards.</p> <ul style="list-style-type: none"> Two additional 0/4 to 20 mA isolated outputs, 1,000 S maximum load Two 4 to 20 mA isolated inputs, 24 VDC loop power Two or four isolated, three-wire RTD (temperature) inputs, -148°F to 662°F (-100°C to 350°C), 100 W platinum Two or four pulse or frequency outputs, optically isolated, 3 A maximum, 100 VDC maximum, 1 W maximum, from DC to 10 KHz maximum Alarm relays: <ul style="list-style-type: none"> » Two or four Form C relays; 120 VAC, 28 VDC maximum, 5 A maximum; DC 30 W maximum, AC 60 VA maximum
Digital Interfaces	<ul style="list-style-type: none"> Standard: RS232 Optional: RS485 (multiuser) Optional: HART® protocol Optional: Modbus® protocol
Data Logging	<ul style="list-style-type: none"> Standard: None Optional: Memory capacity (linear and/or circular type) to log over 150,000 flow data points
European Compliance	System complies with EMC Directive 2004/108/EC, 2006/95/EC, LVD (Installation Category II, Pollution Degree 2) and transducers comply with PED 97/23/EC for DN<25
Preamplifier	<ul style="list-style-type: none"> In-line preamplifier for long cable lengths or attenuating installations Operating temperature: -40°F to 140°F (-40°C to 60°C)

Wetted Ultrasonic Flow Transducers

Temperature Range	<ul style="list-style-type: none"> Standard: -58°F to 302°F (-50°C to 150°C) Optional (overall): -310°F to 842°F (-190°C to 450°C)
Pressure Range	<ul style="list-style-type: none"> Standard: 0 psig to 2700 psig (1 bar to 187 bar) Optional: 3480 psig (240 bar) maximum
Materials	<ul style="list-style-type: none"> Standard: Titanium Optional: Monel® or Hastelloy® alloys
Process Connections	Flanged and compression fittings
Mountings	Flowcell or cold tap
Area Classifications	<ul style="list-style-type: none"> Standard: General purpose Optional: Weatherproof Type 4X IP65 Optional: Explosion-proof Class I, Division 1, Groups C,D Optional: Flameproof II 2 GD EEx d IIC T6 <p>Transducers and flowcells for specific applications are available. Consult Panametrics for details.</p>

Transducer cables

- Standard: One pair of coaxial cables, type RG62 AU, or as specified for transducer type
- Optional: Lengths up to 1000 ft (330 m) maximum

High-temperature and high-pressure ultrasonic flow transducers

Bundle Waveguide Technology™ (BWT) System transducer and holder (see BWT System specifications) are available.

Join the conversation and follow us on LinkedIn
[linkedin.com/company/panametricscompany](https://www.linkedin.com/company/panametricscompany)

Copyright 2025 by Panametrics LLC. All rights reserved.

PANA059DS_R2 (11/2025)

ADDVALUE Instruments B.V.
 Hoevelakenseweg 185 B15
 3784 WH Terschuur (Barneveld)
 Nederland
 Telefoon +31(0)342 22 4015
info@addvalueinstruments.com

 **Panametrics**

[panametrics.com](https://www.panametrics.com)